

---

# ENSignPenWorkspace User Guide

---

## Index

---

<b>1. General description</b> .....	2
<b>2. Installation</b> .....	3
<b>2. Configuration</b> .....	6
2.1. Tablet Settings .....	7
2.2. Pen and Touch Settings .....	8
2.3. Display Settings.....	8
<b>3. Use</b> .....	9

## 1. General description

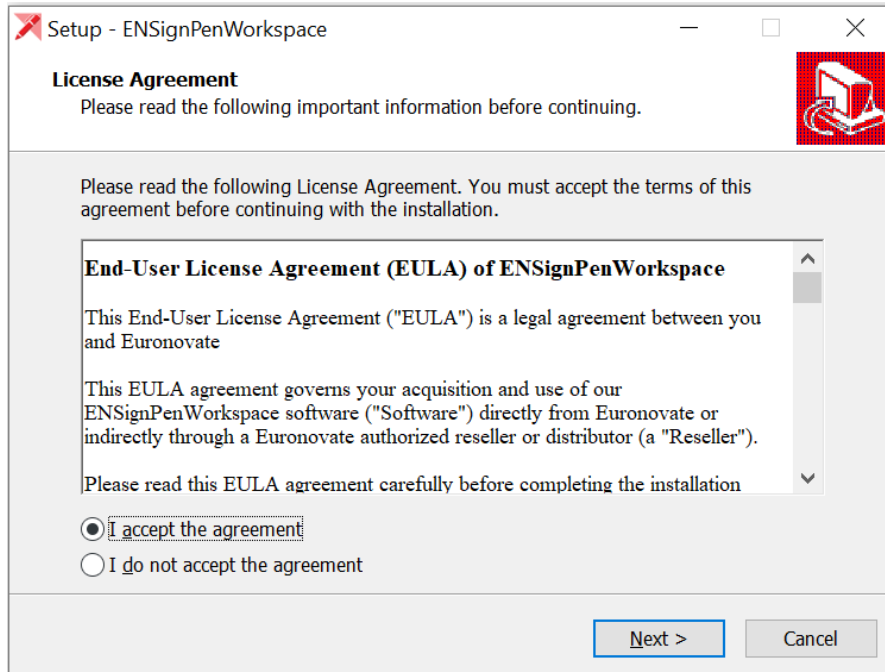
---

In this document you will find a detailed description of the installation process and configuration for the use of the **ENSignPenWorkspace** solution developed by **EURONOVATE SA**.

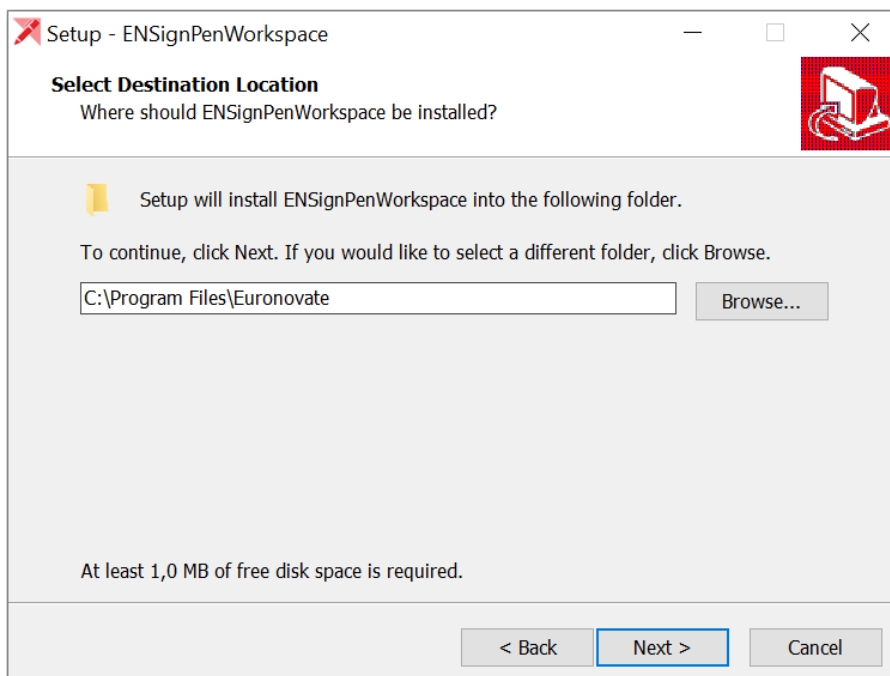
The installation of this application allows the use of the Euronovate tablet pen, as mouse pointer, in a dynamic and versatile way.

## 2. Installation

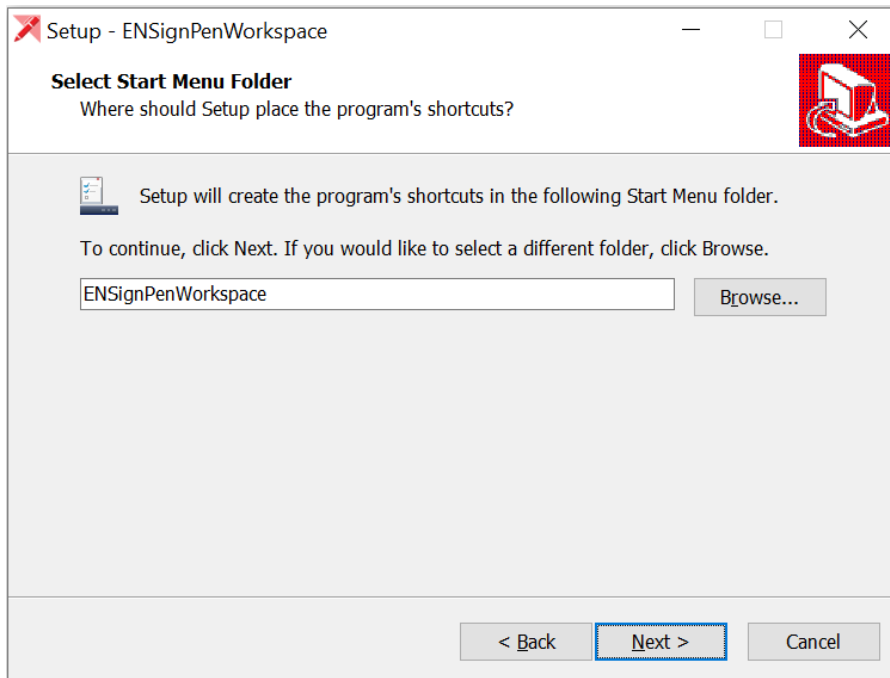
Launch with admin policy the setup file **ENSignPenWorkspace\_X.exe**. During the installation, a sequence of screens will appear as follows:



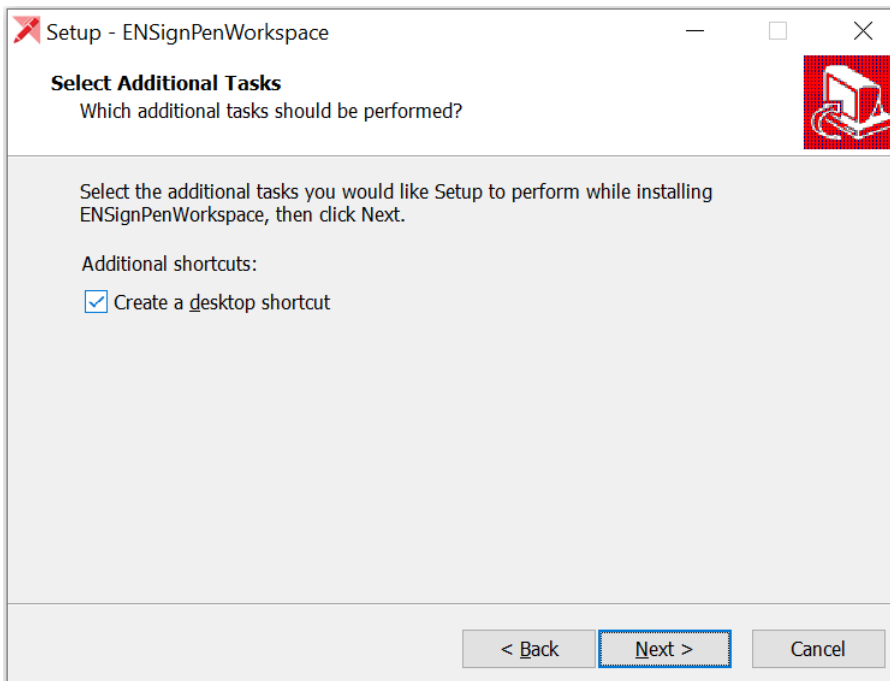
Accept the agreement in order to proceed and then click on "Next >".



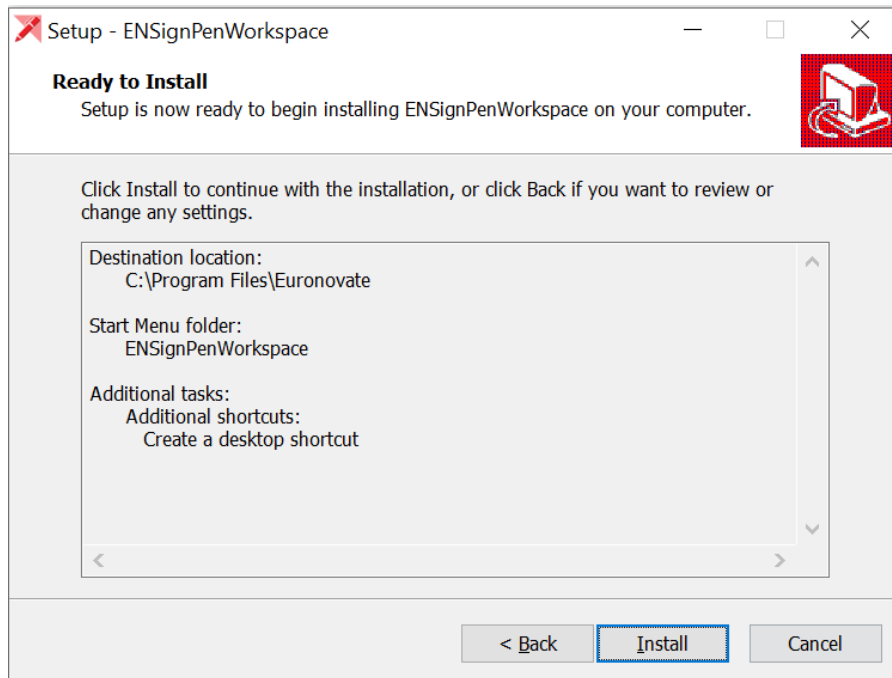
Press "Next >".



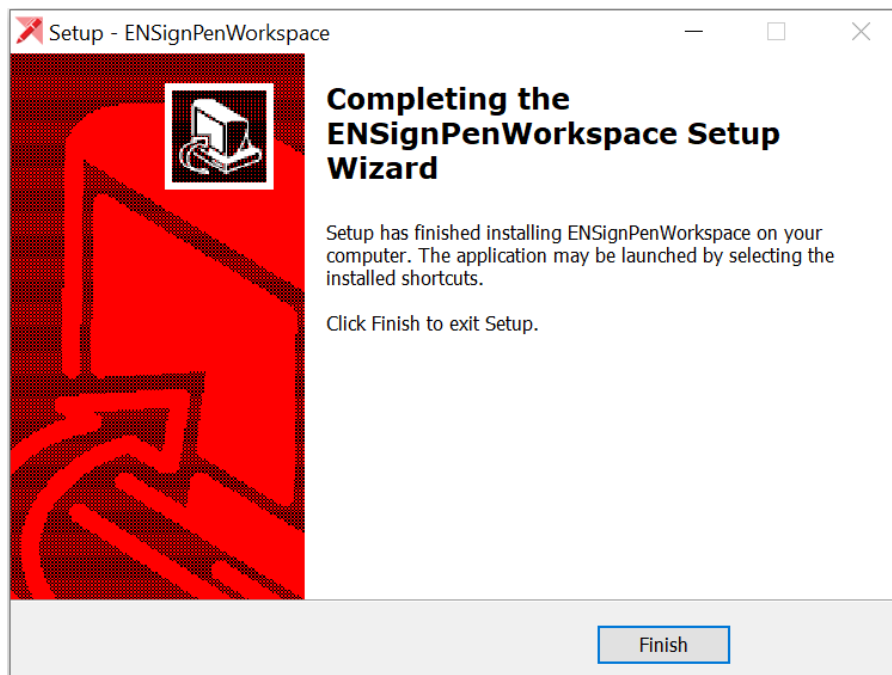
Press "Next >".



Press "Next >".



Press "Install".

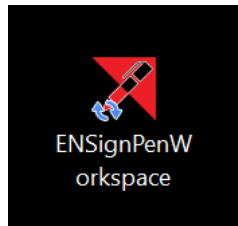


The installation is now complete.

## 2. Configuration

---

To launch the ENSignPenWorkspace tool, click on the icon present on the desktop:

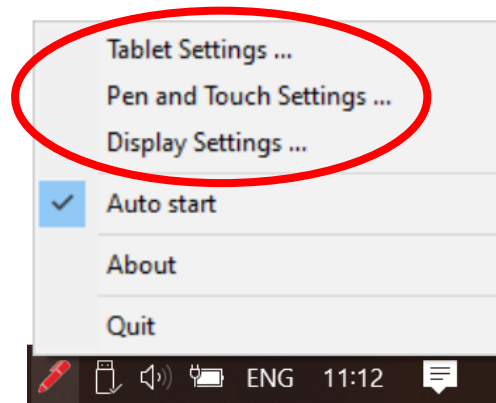


You can also launch the application from the installation folder (default path: *C:\Program Files\Euronovate\ENSignPenWorkspace*) by running **ENSignPenWorkspace.exe** .

Once the application has been launched, in the system tray area of the taskbar you will be able to see the ENSignPenWorkspace tray-icon.

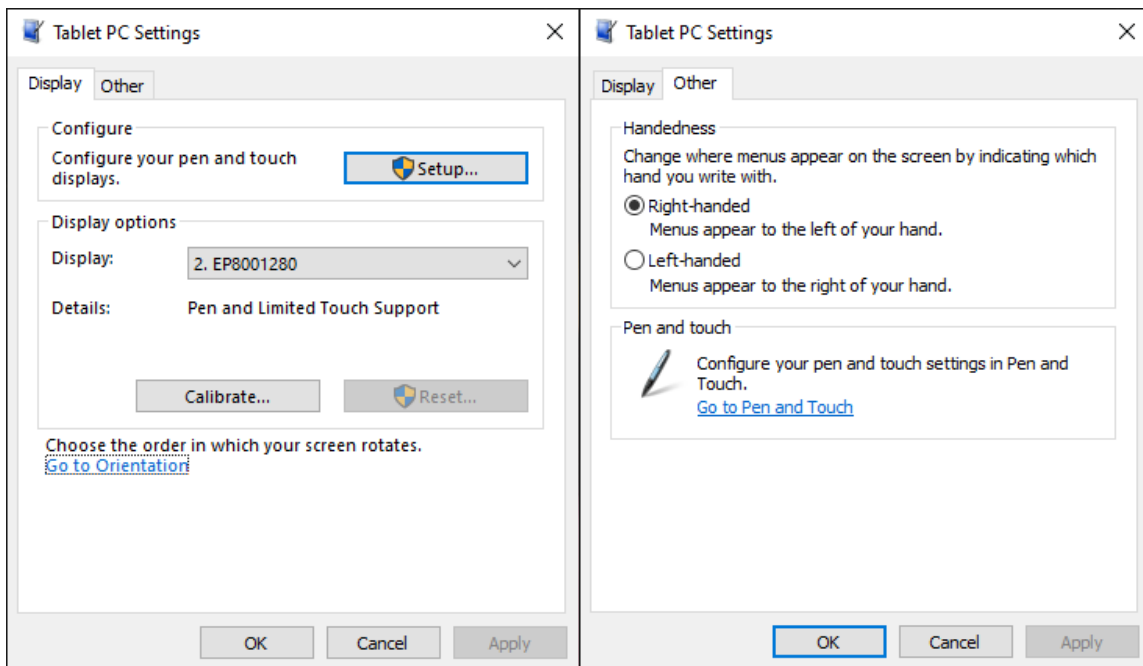


Right-click on the icon to open the menu.



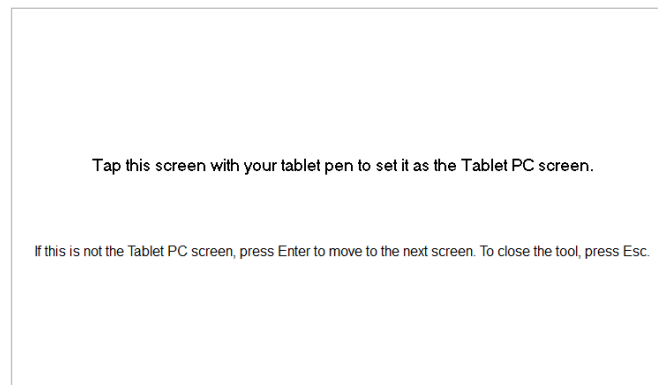
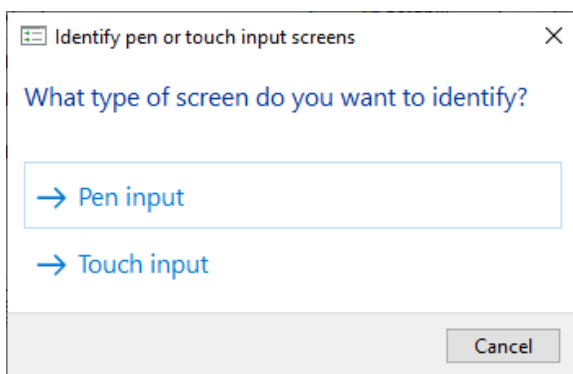
## 2.1. Tablet Settings

By selecting “*Tablet Settings..*” from the menu, the following panel will appear on the screen:



From the **Display** tab, it is possible to configure the ENSignPenWorkspace display settings.

- In the *Configure* section, click on the button “*Setup...*”:



- The *Display options* section also allows you to select the tablet screen display.

**NOTE:** For the correct use of the ENSignPenWorkspace application, the tablet orientation must be set as horizontal.

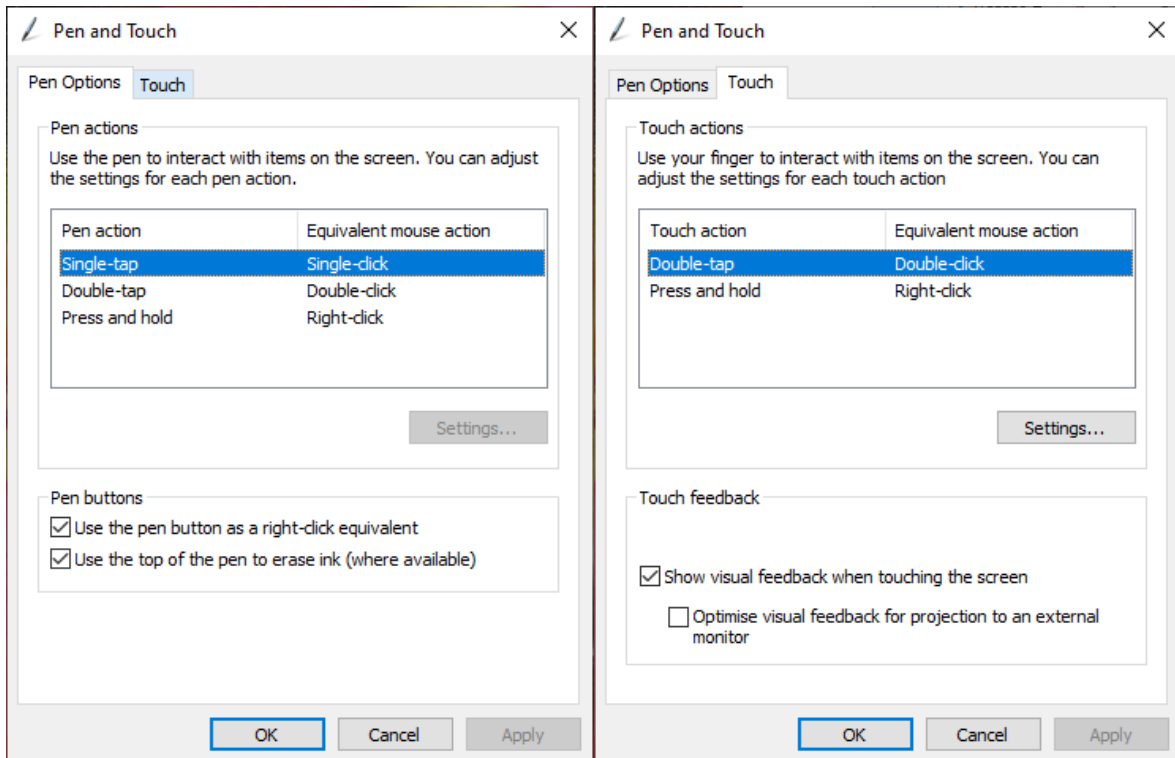
The tab **Other** allows you to set other tablet settings:

- In the section *Handedness*, you can select the writing hand.
- From this section it is also possible to open the “*Pen and Touch Settings*”.



## 2.2. Pen and Touch Settings

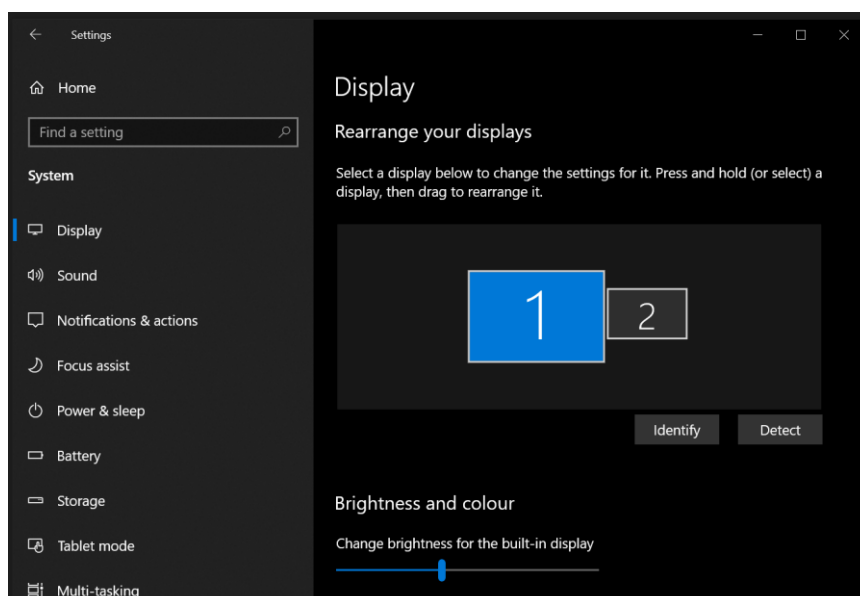
The selection, from the tray-icon menu, of the voice “Pen and Touch Settings..” will open the following panel:



From this panel, it will be possible to set the desired pen and touch configuration for the ENSignPenWorkspace application.

## 2.3. Display Settings

The selection, from the tray-icon menu, of the voice “Display Settings..” will open the Windows Display Settings menu.



### 3. Use

After the configuration of the ENSignPenWorkspace settings, while the application is running, it will be possible to use the pen as a mouse pointer.

This feature will allow you to take notes, highlight information and draw through the tablet device and its pen:

